

# SPRAY GRANITE

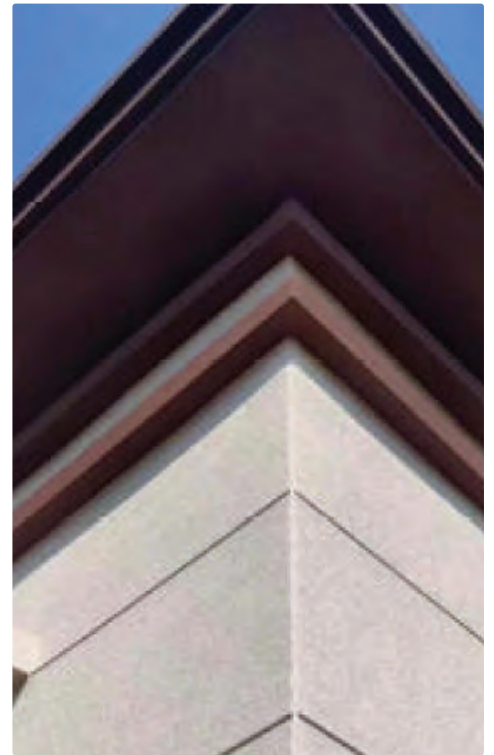
**INFINITY**  
EFFECTS  
INTERNATIONAL INC.

"EXPLORE THE POSSIBILITIES"



**INFINITY**

EXPLORE  
THE  
POSSIBILITIES



CRACK RESISTANT  
SPRAY COATING



EXTERIOR WALL  
PAINT

GRANITE EFFECT COATING

## SPRAY GRANITE

### Features

- ✓ Fast drying, odor free, non-toxic, Environmentally Friendly
- ✓ Advanced technology to create realistic imitation stone effect
- ✓ Large colour range & unlimited colour combinations
- ✓ Anti-fungal, anti-mildew, alkali-resistant
- ✓ Waterproof, fire-resistant, high UV resistance, weather and chemical resistant
- ✓ Washable, high scuff resistance, non-fade, high durability
- ✓ High coating coverage, easy application, minimal maintenance
- ✓ Will not spall like real stone or traditional ceramic preventing safety concerns

### Construction guidance

**First:** Roll or spray primer 1-2 layers until the sub-base is completely covered (Before applying primer, if possible use water to thoroughly clean and remove any dust or dirt that may be present on the sub-base.)

**Second:** Roll or spray Hydro Paint 1-2 layers until a uniform finish is achieved.

**Third:** Spray granite effect paint layer until desired coverage is achieved.

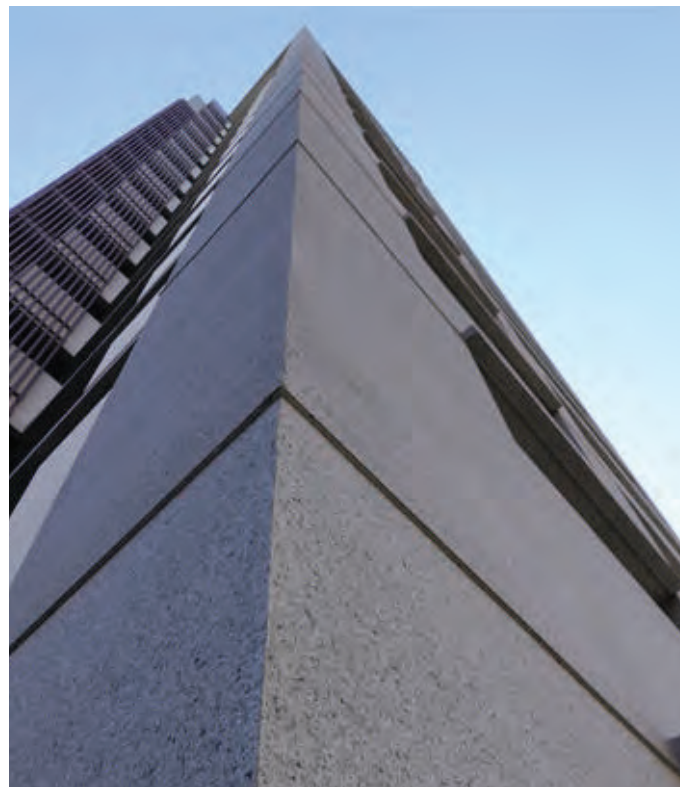
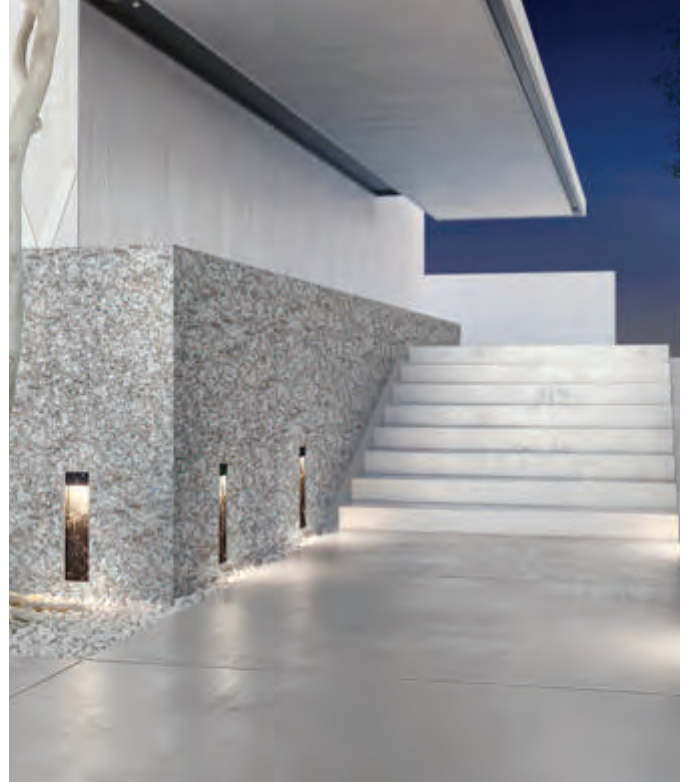
**Forth:** Roll or spray Topcoat layer 1-2 times to seal system

**Note:** When proceeding to the next steps, wait for previous step to completely dry.

Paints are not recommended to be installed if temperature is lower than 5C/41F, or relative humidity is greater than 85%.

### Application Scenarios

Suitable for commercial buildings, offices, hotels, schools, hospitals, apartments, villas and other exterior and interior wall decoration and protection. When applying to metal, wood, concrete, stucco etc correctly prepare surface with recommended treating agent, then roll primer and continue with construction process of system

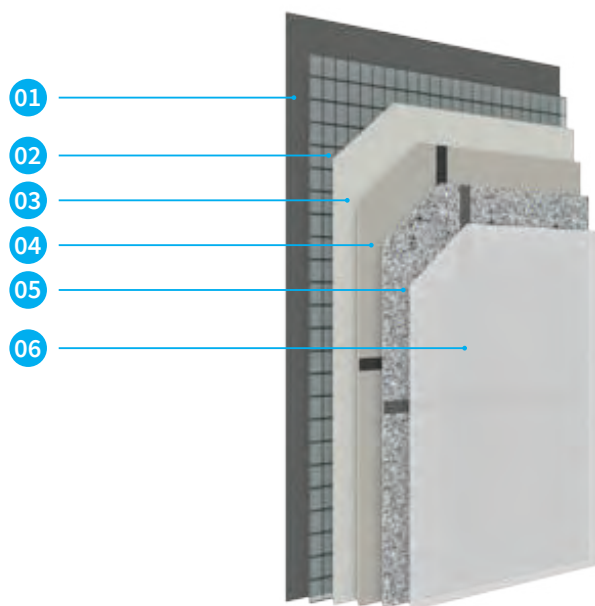


# SPRAY GRANITE

TECHNICAL PARAMETERS		COMPOSITION
Property	Solvent free ( Water based )	High elastic emulsion
Dry film thickness	2mm/layer	Natural sand and stone particles
Coverage	125g - 500g / m2, 4.5oz - 17.6oz / sq. ft	Inorganic filler
Drying time (surface dry)	>8h (25-27°C) ( 77 - 81°F )	Water
Touch dry	<4h (25-27°C) ( 77 - 81°F )	
Drying time (complete)	>24h (25-27°C) ( 77 - 81°F )	
Coating layer	2-3 layers	
Service life	> 10 years	
Paint colors	Granite stone catalog	
Application way	Spray gun	
Storage	<30°C, cool, dry	

## PROCESS FLOW

- 01 Prepare sub-base  
(Prep will verify dependent on sub base type)
- 02 Stick the fiberglass nets (Can skip )
- 03 Roll the primer
- 04 Roll the hydro paint coating
- 05 Spray the main material
- 06 Roll the topcoat



## SPRAY GRANITE ADVANTAGES



High  
Water Retention



Natural  
Stone Effect



Anti-Cracking  
Properties



No Overlapping  
Defects



Environmentally  
Friendly



Low Wastage  
Of Material



Easy Application



Long Service Life



Anti - Bacterial



# SPRAY GRANITE

**INFINITY**  
EFFECTS  
INTERNATIONAL INC.

"EXPLORE THE POSSIBILITIES"

